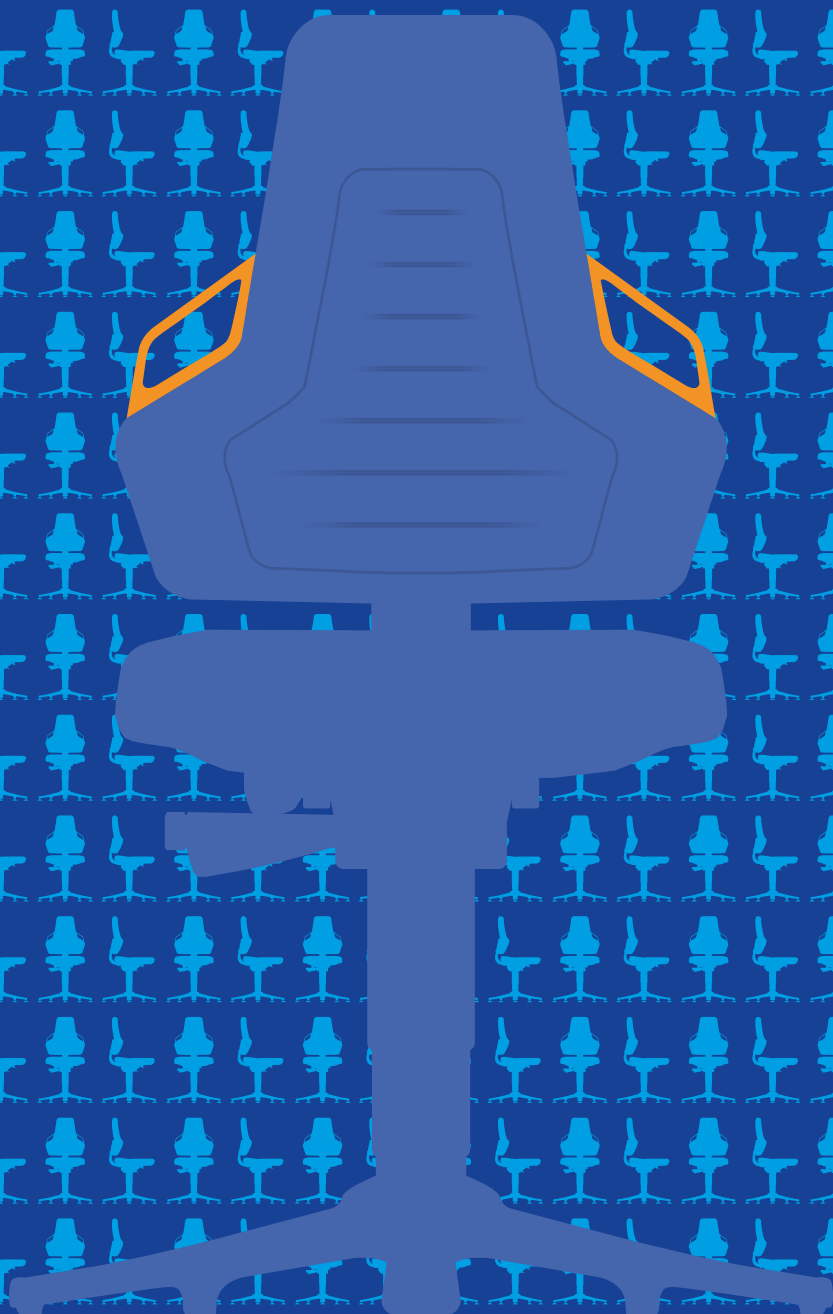
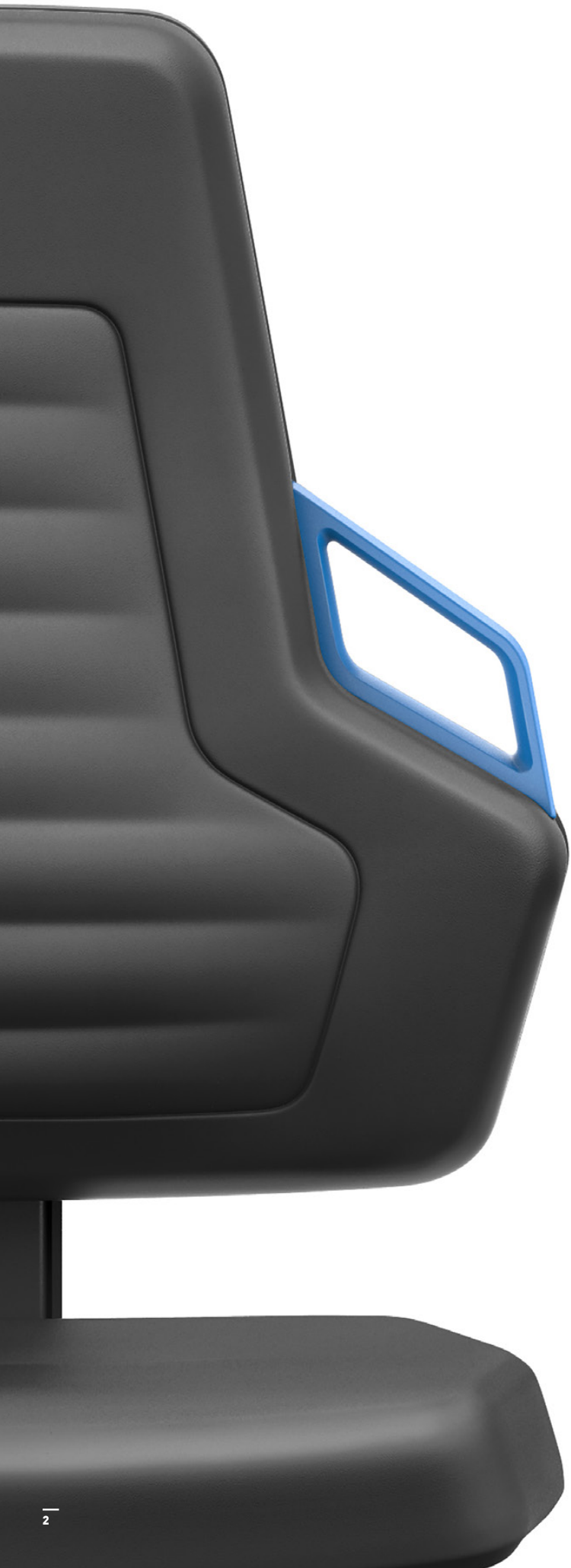


bimos

NEXXIT

YOUR STRONG PARTNER
AT WORK.





**NEXXIT IS THE PERFECT FIT
FOR ALL APPLICATIONS IN INDUSTRY,
FOR ESD WORKSTATIONS AND
FOR THE LABORATORY.**



NEXXIT – YOUR STRONG PARTNER AT WORK.

Ergonomic support, practical handling and outstanding robustness – modern industry demands specific requirements of the quality of workplace chairs. With its unique industry ergonomics as well as simple, intuitive adjustment to the respective user, Nexxit automatically ensures the correct sitting posture. It impresses with high comfort and extreme resistance for use in industrial environments. This makes Nexxit your strong partner for all types of tasks.



Bimos is Europe's leading manufacturer of the best industrial and laboratory chairs. For over fifty years, using our specialist knowledge, technical expertise and dedication, we have been ensuring that seating keeps people productive, healthy and happy at every workplace.

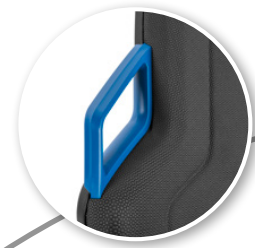


NEXXIT –
A WORKPLACE CHAIR
THAT LENDS A HAND.



USEFUL FUNCTIONAL HANDLES

Always within reach and with good grip: The robust functional handles add practical mobility to Nexxit so that cover materials are protected from dirty hands during transport. The colours bring a fresh look to every workplace.



SUPPORT FOR A STRONG BACK

Nexxit proves that it has backbone. Its ergonomic backrest with horizontal stitching relieves pressure on the spine and muscles and ensures a comfortable seating environment. The tapered design towards the top opens up generous ranges of motion and reaching distances.



WORK WITH ADDED COMFORT

Nexxit has thick padding and is very soft, ensuring a high level of comfort. The shape of the seat is designed especially for industrial workplaces and promotes correct posture and good blood circulation.



AUTOMATICALLY WELL SEATED

Nexxit combines first-class industrial ergonomics with minimum adjustments. Its synchronous mechanism with automatic weight regulation is unique in the industrial environment. The operation is intuitive and requires only one lever.



NEXXIT – A TRUE PROFESSIONAL AMONG THE MOVERS AND SHAKERS.



RELIEVES STRAIN ON THE ARMS

With its soft comfort pads the Nexxit optional multifunctional armrest actively relieves the strain on neck muscles. In order to optimally support each individual user, the height, width and depth can be quickly adjusted – and it can also be swivelled by 30°.



ROBUST

Nexxit handles the challenge of industrial workplaces effortlessly and confidently. The connections between seat and back as well as the base are made from robust steel. Nexxit is extremely sturdy and indestructible – and comes with a 10-year warranty.



Guarantee
10
Years



NEXXIT – BRINGS JOY TO EVERY WORKPLACE.

An ideal solution for every type of task in industry – and for every user. Nexxit impresses with intuitive operation and has a characteristic design. It fits perfectly into the industrial environment and makes an active contribution to the design of an attractive workplace. This makes the employees happy and motivated and improves commitment and the quality of results.



Although the workplaces in modern industrial production are very different, they all have one thing in common: They pose tremendous challenges for the workplace chair – from the technical requirements to the material resistance against external factors, through to the ergonomic quality. As your strong partner, Nexxit possesses all the properties needed to support you in industrial work.

- Excellent design for modern workplaces
- High mobility, easy handling
- Sturdy and resilient
- Excellent price-performance ratio
- Industry-specific ergonomics
- Automatic weight regulation
- Preset range of movement for backrest
- Electrostatically conductive (optional)
- Easy to clean
- Durable
- 10-year warranty
- Safe and conform to standards



NEXXIT – MANY REQUIREMENTS, ONE STRONG RESPONSE.



Production work areas



ESD workstations



Laboratory workstations



Research and development



Work areas with alternating users



Workstations where robustness is required



Processes with requirement for a wide range of movement



High workstations



Low-level workstations



Guarantee
10
Years



Fraunhofer
IAO



THE UNIQUE INDUSTRIAL ERGONOMICS OF NEXXIT

SYNCHRONOUS MECHANISM AND INTUITIVE OPERATION

The synchronous mechanism with automatic weight regulation, which is unique in the industry, automatically adapts to the user. It ensures optimal backrest contact pressure and thus active, dynamic sitting. This also makes Nexxit ideal for work areas with alternating users.

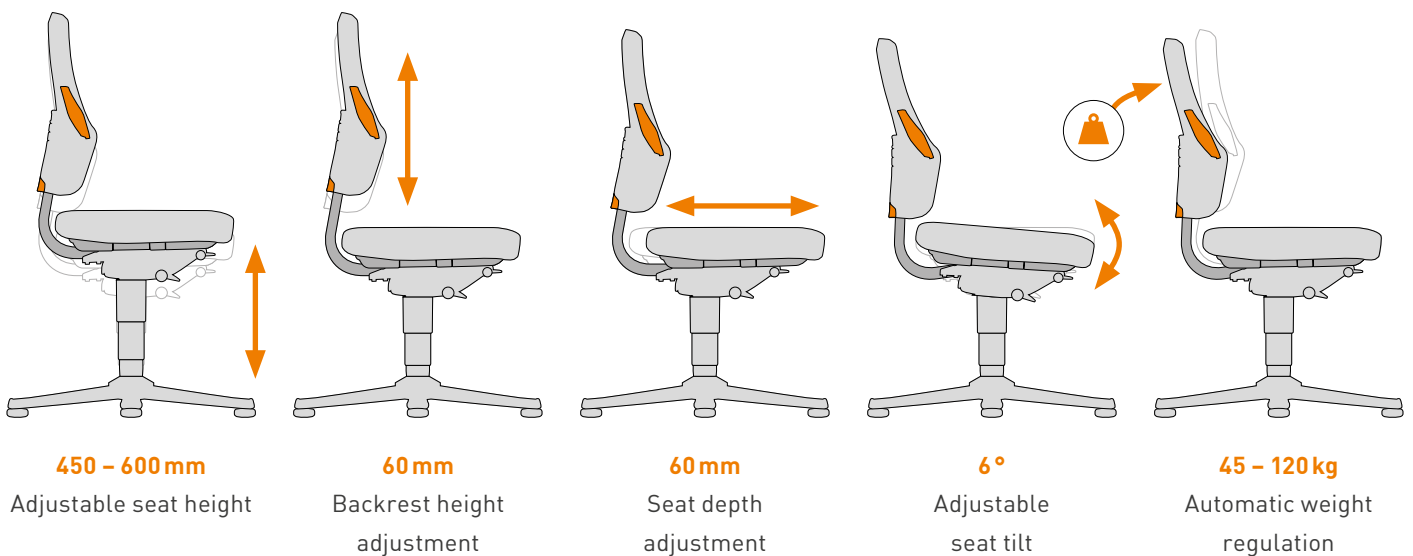
3-LEVEL PRESELECTION

The right operating range for every task. In order to meet the different work requirements, the range of movement of the Nexxit backrest can be preset on three levels:

- When the backrest is locked, level 1 provides optimal support for work which requires a lot of force or effort.
- For precision mechanical activities, e.g. with short eye distance to workpiece, level 2 ensures dynamic sitting with a medium range of movement.
- Level 3 offers the full range of movement if wide ranges of movement and reaching distances are required.

ERGONOMICS PACKAGE

The ergonomics package is always included with Nexxit. The height of the seat and backrest as well as the seat depth and seat tilt can be quickly adjusted to the respective body size. Nexxit does away with complicated adjustment tasks – all settings can be performed using just one hand.



NEXXIT – AUTOMATICALLY WELL SEATED.

A modern workplace chair must be first and foremost: self-explanatory. Especially at workstations with frequently alternating users ergonomic features can only display their full quality when they are also understood. Nexxit is not only simple, it also flexibly adapts to the user's weight and thus automatically assumes the essential basic settings.







NEXXIT – IDEALLY EQUIPPED FOR THE INDUSTRY.

Whether it is a matter of intensive use, minor collisions, chippings or flying sparks – you can always rely on Nexxit in day-to-day industrial operation. It rises to every challenge and can take a lot of hits. The design of the chair is conventional and there are no risk factors. The materials used are characterised by maximum resistance against typical industrial effects. For instance, the connecting element between seating surface and backrest is made from robust steel, as is the sturdy base. Furthermore, the practical functional handles ensure safe handling during transport between different areas of use.



CHOICE OF FOUR COLOURS

BLUE | GREY | ORANGE | GREEN
NO HANDLES



ESD VERSION

BLACK
NO HANDLES



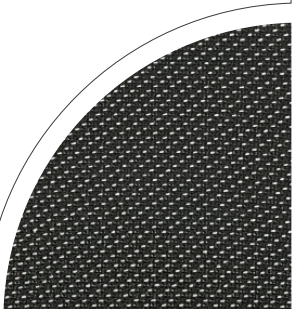










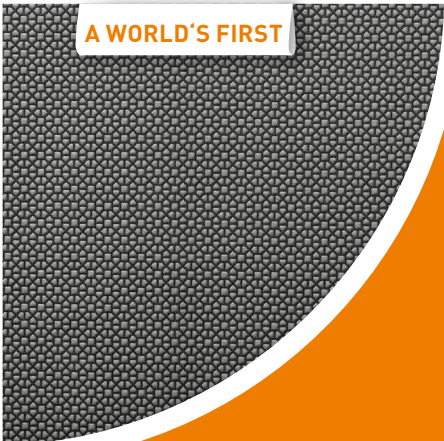


DESIGN STORY

With Nexxii the designer Volker Eysing developed an industrial chair which impresses with its clear structure and intelligent design, but above all because it is so easy to understand. The result is a design with a clear creative hallmark that combines intuitive functionality with harmonious proportions. The side handles are a characteristic design feature. On the one hand, they serve as a colour accent whilst at the same time they exude mobility, quality and stability.


NEXXIT – CHOICE OF 4 COVER MATERIALS.

Nexxit offers the right upholstery to match the respective task. From resistant to easy care through to breathable and comfortable – the choice of high-quality materials makes Nexxit the perfect fit for all applications in industrial environments.


HERE'S HOW TO CHOOSE THE RIGHT UPHOLSTERY FOR APPLICATIONS
IN THE INDUSTRIAL ENVIRONMENT OR IN THE LABORATORY.

| | |
|---|---|
| <p>Duotec fabric</p> <ul style="list-style-type: none"> • Breathable • Comfortable • Soft • Hard-wearing    | <p>Integral foam (PU)</p> <ul style="list-style-type: none"> • Extremely robust, durable • Washable • Withstands mechanical influences • Resistant to flying sparks • Resistant to light acids and alkalis     |
| <p>Magic synthetic leather</p> <ul style="list-style-type: none"> • Washable and easy care • Soft and comfortable • Resistant to disinfectants • Antibacterial • PVC-free     | <p>A WORLD'S FIRST</p>    |

Protective studs



Breathable



Supertec is a **worldwide innovation** among the cover materials. Thanks to its micro-plating it combines the benefits of fabric and integral foam (PU).

- Soft and comfortable
- Firm
- Breathable
- Very resistant
- Non-slip
- Easy to clean

NEXXIT AT A GLANCE



NEXXIT 1



NEXXIT 2



NEXXIT 3

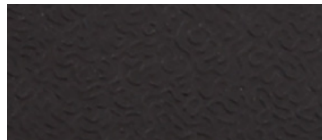


All models also available as ESD version
i.a.w. EN 61340-5-1

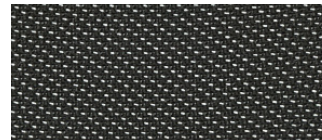
UPHOLSTERY



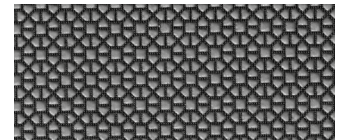
MAGIC SYNTHETIC LEATHER
MG01 / MG01 (ESD)



INTEGRAL FOAM (PU)
2000 / 2000 (ESD)



DUOTEC FABRIC
6801 / 9801 (ESD)



SUPERTEC
SP01 / CP01 (ESD)

HANDLE COLOUR



BLUE
3277



GREY
3278



ORANGE
3279



GREEN
3280



BLACK
3218 (ESD only)

ACCESSORIES AND OPTIONS



**MULTIFUNCTIONAL
ARMREST**

9039 / 9039E

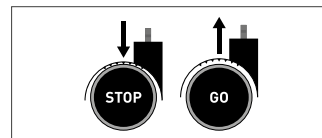
- + To relieve the strain on the upper body and arms, especially for fine motor activities
- + Adjustable height, depth and width, swivel-mounted



**FOOT RING
FOR NEXXIT 1 AND 2**

9478

- + Height-adjustable



**STOP-AND-GO CASTORS
FOR NEXXIT 3**

807

- + For safe fixation when sitting and mobility when unloaded



**POLISHED ALUMINIUM
5-STAR BASE**

521304

- + Elegant and high-quality



| Basic equipment and options | | | ESD NEXXIT 1 with glides | | ESD NEXXIT 2 with castors | | ESD NEXXIT 3 with glides and foot ring | |
|-----------------------------|-----------|------|--------------------------|------|---------------------------|------|--|--|
| Colour | Order No. | 9030 | 9030E | 9033 | 9033E | 9031 | 9031E | |

| Dimensions | Seat height | 450–600 mm | 450–600 mm | 570–820 mm |
|------------|-----------------|------------|------------|------------|
| | Seat width | 460 mm | 460 mm | 460 mm |
| | Seat depth | 400–460 mm | 400–460 mm | 400–460 mm |
| | Backrest height | 530 mm | 530 mm | 530 mm |
| | Ø 5-star base | 680 mm | 680 mm | 680 mm |

| Seat padding | Duotec fabric | Black | 6801 / 9801 [ESD] | ○ | ○ | ○ |
|--------------|-------------------------|-------|-------------------|---|---|---|
| | Magic synthetic leather | Black | MG01 / MG01 [ESD] | ○ | ○ | ○ |
| | Integral foam (PU) | Black | 2000 / 2000 [ESD] | ○ | ○ | ○ |
| | Supertec | Black | SP01 / CP01 [ESD] | ○ | ○ | ○ |

| Handles | Blue | 3277 | ● | ● | ● | |
|---------|-------------|-------|------|---|---|---|
| | Grey | 3278 | ○ | ○ | ○ | |
| | Orange | 3279 | ○ | ○ | ○ | |
| | Green | 3280 | ○ | ○ | ○ | |
| | no handles | 3001 | ○ | ○ | ○ | ○ |
| | ESD version | Black | 3218 | ● | ● | ● |

| Functions / Mechanics | Synchronous mechanism | ● | ● | ● |
|-----------------------|--|---|---|---|
| | Automatic weight regulation with fine adjustment | ● | ● | ● |
| | Seat depth adjustment | ● | ● | ● |
| | Adjustable seat tilt | ● | ● | ● |
| | Backrest height adjustment | ● | ● | ● |

| 5-star base | Steel | Black | ● | ● | ● |
|-------------|-----------|----------|--------|---|---|
| | Aluminium | polished | 521304 | ○ | ○ |

● Standard ○ Option



Tested for harmful substances



Environmentally friendly



Long warranty



Tested for safety



Antibacterial



Cooperation partner



WolfLabs

Pricing on any accessories shown can be found by keying the part number into the search box on our website.

The specifications listed in this brochure are subject to change by the manufacturer and therefore cannot be guaranteed to be correct. If there are aspects of the specification that must be guaranteed, please provide these to our sales team so that details can be confirmed.

www.wolflabs.co.uk

Tel : 01759 301142

Fax : 01759 301143

sales@wolflabs.co.uk

Please contact us if this literature doesn't answer all your questions.